



HM Government



CORONAVIRUS

Have you been to an affected place
in the last 14 days

or

had contact with somebody
with Coronavirus,

and

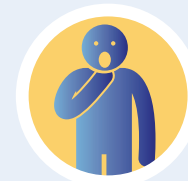
do you have any of these symptoms?



Cough



Fever



Shortness of
breath

If yes, to protect yourself and others please go
home and call NHS 111 for expert advice.

Do not enter this building

Find out more at nhs.uk/coronavirus